

# Sunprotection by





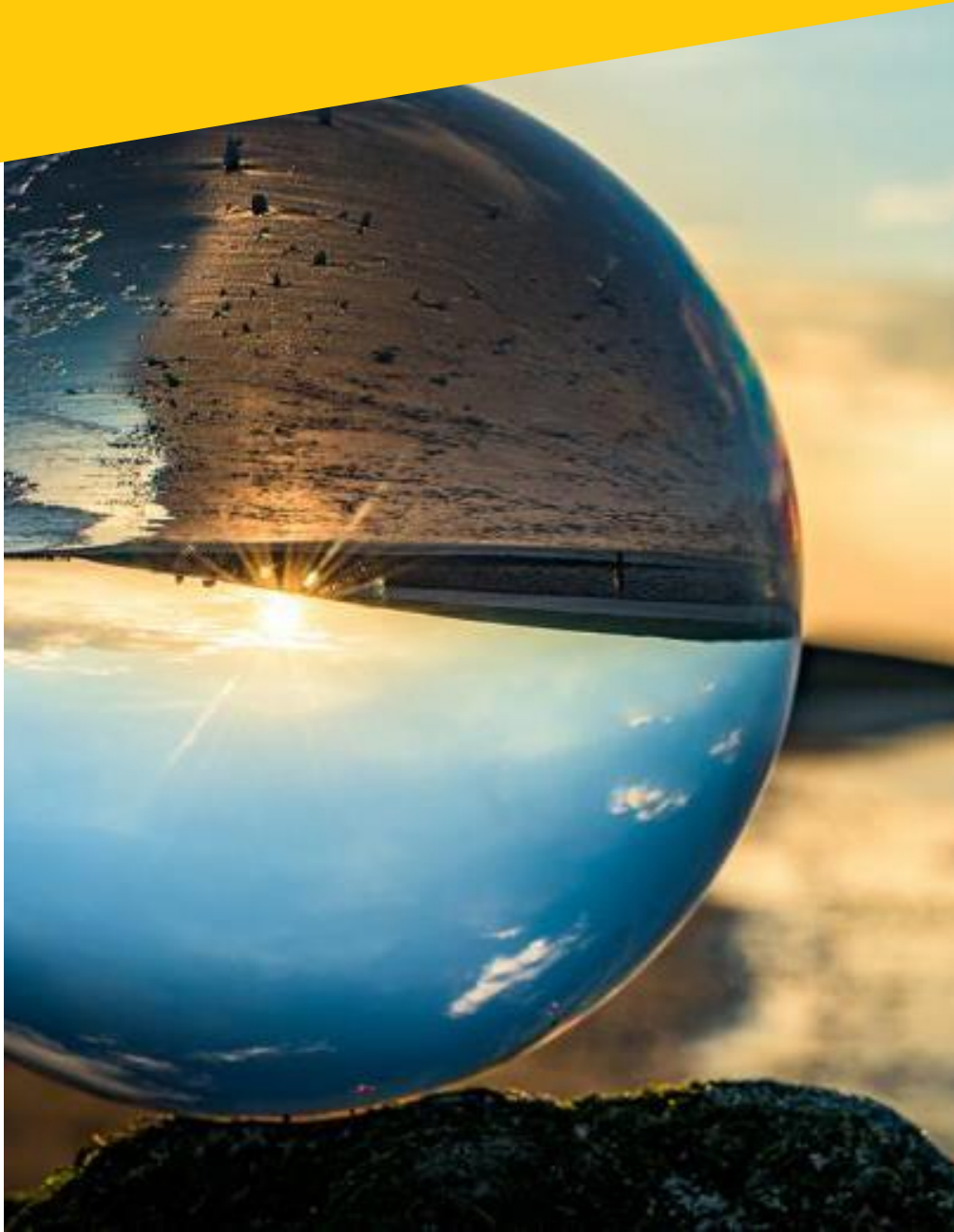


## A well considered choice for quality and durability

From the start onwards SOLARMATIC has made a clear choice for its indoor sun protection: glass fiber.

Glass fiber offers **durability** as well as **high qualitative advantages**.

It combines unique product performance with **timeless aesthetics**.



# NATURAL MATERIAL

First of all, glass fibre is a completely **natural material**. Ecologically pure and non harmful to human health. It is produced out of Quartz and sand minerals, one of nature's most common materials. The raw materials are melted at 1580°C in a furnace resulting in liquid glass which is spun into fibres.

Contrary to other materials on the market, glass is **not oil-based** and contains **no PVC**.

Also, the inherent non-combustible properties of the material allows it to reach the highest fire retardant standards without adding halogen bases chemistry resulting in a **Halogen-free** high technical product.





## Safety first

Glass fiber is non-combustible in nature which means that unlike classic synthetic fibres, glass fibre yarns are not a source of fuel to the combustion process, and when subjected to the intense heat or fire, **does not form molten drips** that can spread flame in the interior.

Another great feature is that the glass fibre fabrics **do not require additional chemistry** like halogens to boost the fire retardant properties.

Maybe one of the most important features regarding safety, is that, unlike PES and PVC containing products, glass fiber **does not generate smoke or toxic gases when ignited**.







## High technicality – Extreme durability

Glass fibre can be handled like any other yarn. It can be twisted, warped and woven. Due to its composition, it offers many rare characteristics like strength, flexibility, non-combustibility, water and chemical resistance.

Due to the inert nature of the material, glass fiber **does not shrink or elongate over time** due to changing temperature levels.

Glass fiber is also moisture resistance which means it **does not absorb moisture**.

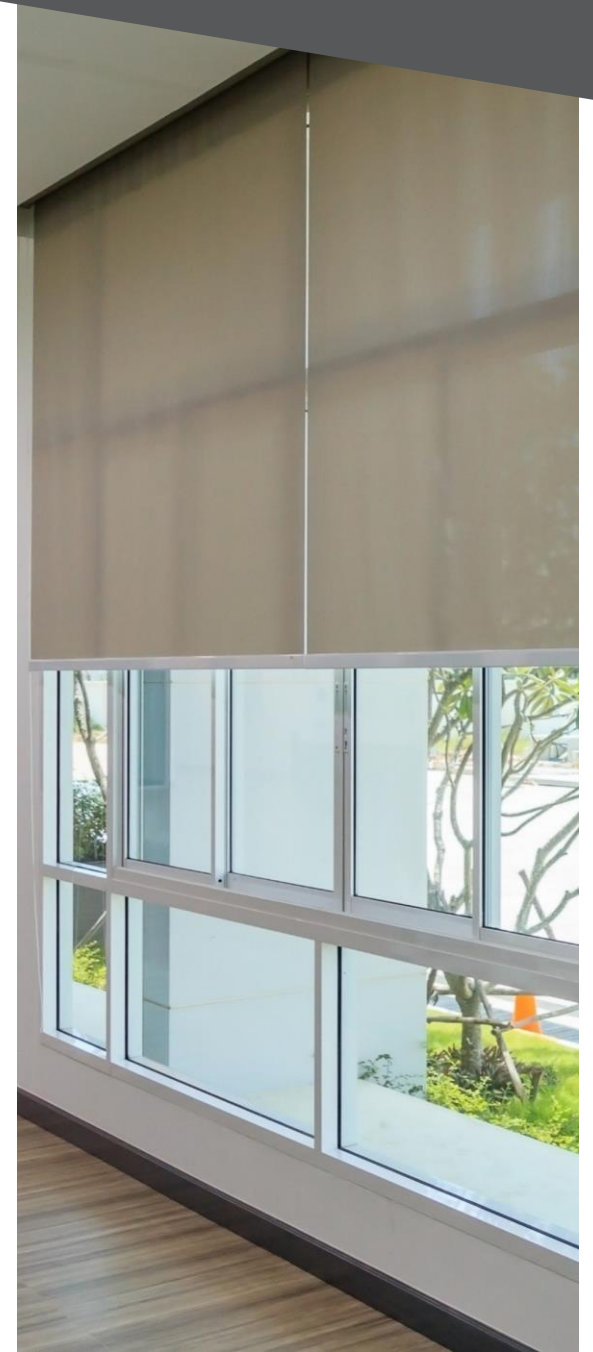
## Handling & applications

Designed and manufactured in Belgium, SOLARMATIC is the worldwide leading expert in 100% glass fiber fabric finishing.

Offering properties as **visual comfort**, **energy saving** and **acoustic properties**, Flocart fabrics remain **easy to assemble** and offer a solution for a large range of confection types.

SOLARMATIC products are **heat sealable**, **do not fray out**, can be used as **roller blinds and verticals**, are **railroadable** and are **zip-system approved**.

Moreover, for extra customisation, our fabrics are **digitally printable**.





# Your halogen-free A2 solution

## 0952 Technic & 1150 Technic

With both the 0952 Technic and 1150 Technic, SOLARMATIC offers a PVC and halogen-free solution meeting the highest level of smoke and fire safety: the A2 FR norm.

Both references are available in Rollo (2350mm) as well as verticals (89mm & 127mm).

The color range of both products have been carefully re-designed in order to suit the most classic and modern interiors in a highly fashionable way.





## Your FR / black-out solution

### 07642 Technic & 07642 Nox

With both the 07642 Technic and 07642 NOX, SOLARMATIC offers a PVC and halogen-free solution meeting the highest level of smoke and fire safety. The Technic reference is a transparent version, whereas the NOX is the black-out version of the same fabric.

Both references are available in Rollo (2350mm) as well as verticals (89mm & 127mm).

From February 2022 onwards, both references will also be available in a big width of 3200mm.

**100%**  
**Blackout**



ENERGY  
SAVING







## About Ecological responsibility

Corporate social responsibility is a full part of the group culture. This is why we continuously strive to reduce the ecological footprint to an absolute minimum in our production processes.

For our group, **Ecological responsibility** equals **Sustainable responsibility**.

Where possible we keep improving and pushing the boundaries of technology in order to minimise the impact on our environment.

In our plant, we do not use ground water but we take water out of the river, treat it for production, use it, recover heat energy, use it as cooling water, treat it again and put it back in the river. In other words, we do not take water, we borrow it. For Every 100L used in production, 95L goes back. Which results in a very low consumption rate compared to standard production methods.





## GET INTOUCH

[info@SOLARMATIC.de](mailto:info@SOLARMATIC.de)

[www.SOLARMATIC.de](http://www.SOLARMATIC.de)

---

SOLARMATIC– Barnimstraße 18 / 19 - 15345 Eggersdorf bei Berlin - 03341 / 44868-0

---